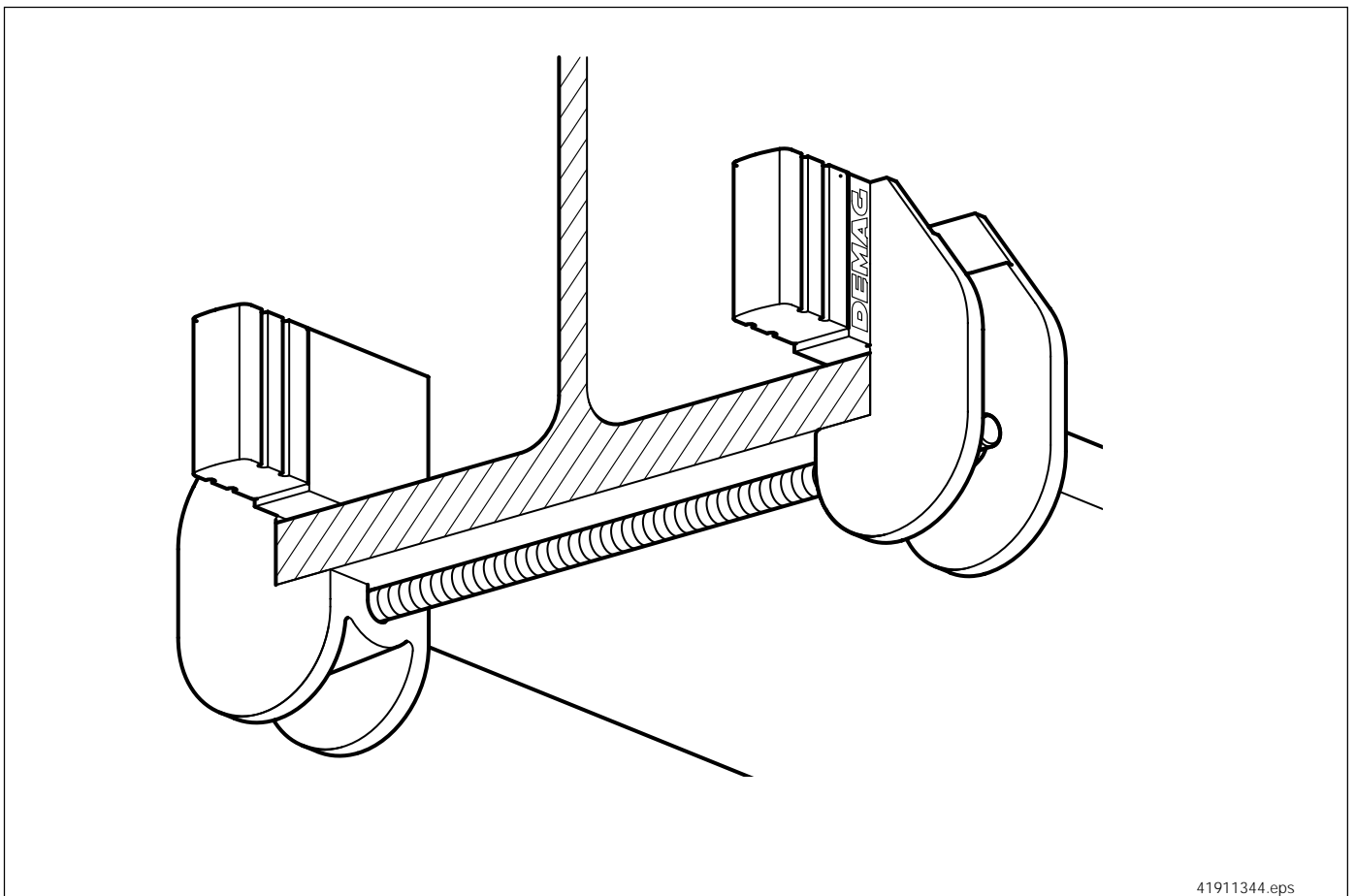


Technical data and fitting instructions

KP-A10 and KP-A12 clamp-fitted bumpers



41911344.eps

Manufacturer

Mannesmann Dematic AG

29201 Aurora Road, Cleveland, Ohio 44139
Telephone (440) 248-2400, Fax (440) 248-3086
Internet <http://www.dematic-us.com>

Foreword



You have purchased a Mannesmann Dematic product.

This product was manufactured in accordance with German and European standards and regulations, e.g. EC Machinery Directive, and state-of-the-art engineering principles.

These operating instructions are designed to provide the operator with appropriate instructions for safe and correct operation.

Every individual given the task of transporting, installing, commissioning, operating, maintaining and repairing our products and additional equipment must have read and understood

- the operating instructions
- the safety regulations and
- safety instructions in the individual chapters and sections.

The operating instructions must be available to operating personnel at all times in order to prevent operating errors and to ensure smooth and trouble-free operation of our products.

1 Safety instructions

1.1 Symbols

The following symbols and instructions warn against possible personal injuries or damage to property and are intended to assist you in your work.



Safety at work symbol

This symbol appears in the operating instructions next to all instructions relating to safety at work wherever a potential danger to life and limb exists.

Follow these instructions at all times and be particularly careful and cautious.

Pass on safety instructions to all persons entrusted with working on the product including any power supply.

In addition to the safety instructions, observe all general safety regulations and factory accident prevention regulations at all times.

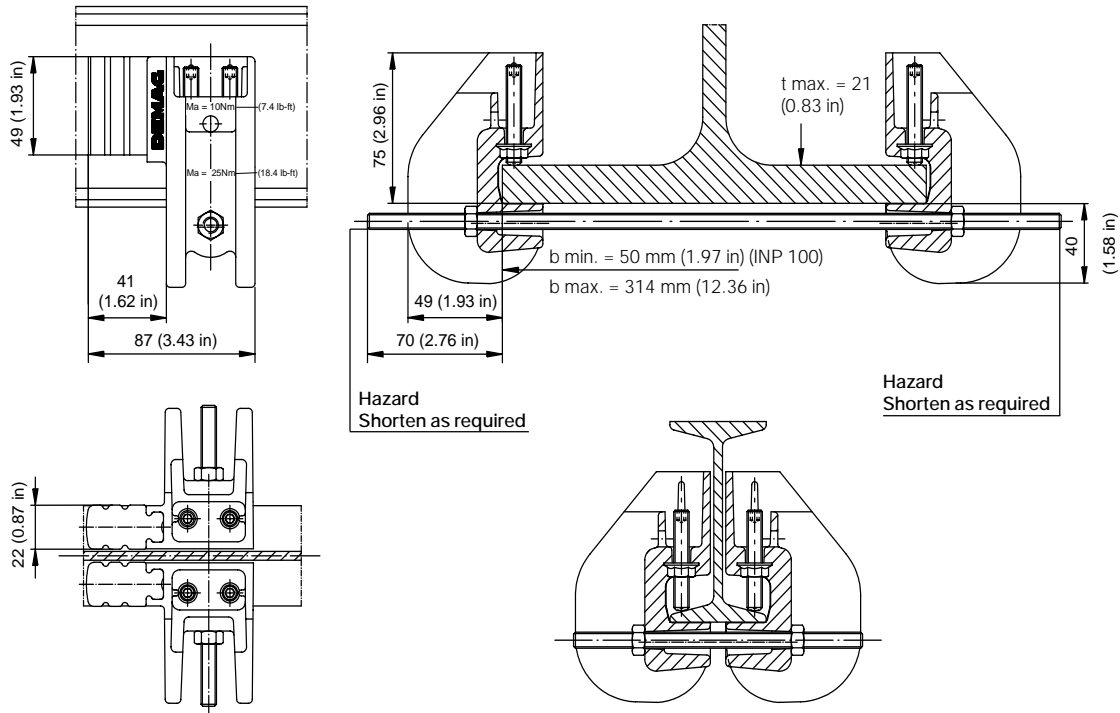


Operating hazard for the installation

This symbol in the operating instructions indicates all warnings which, if not complied with, may result in malfunctions or damage to the product.

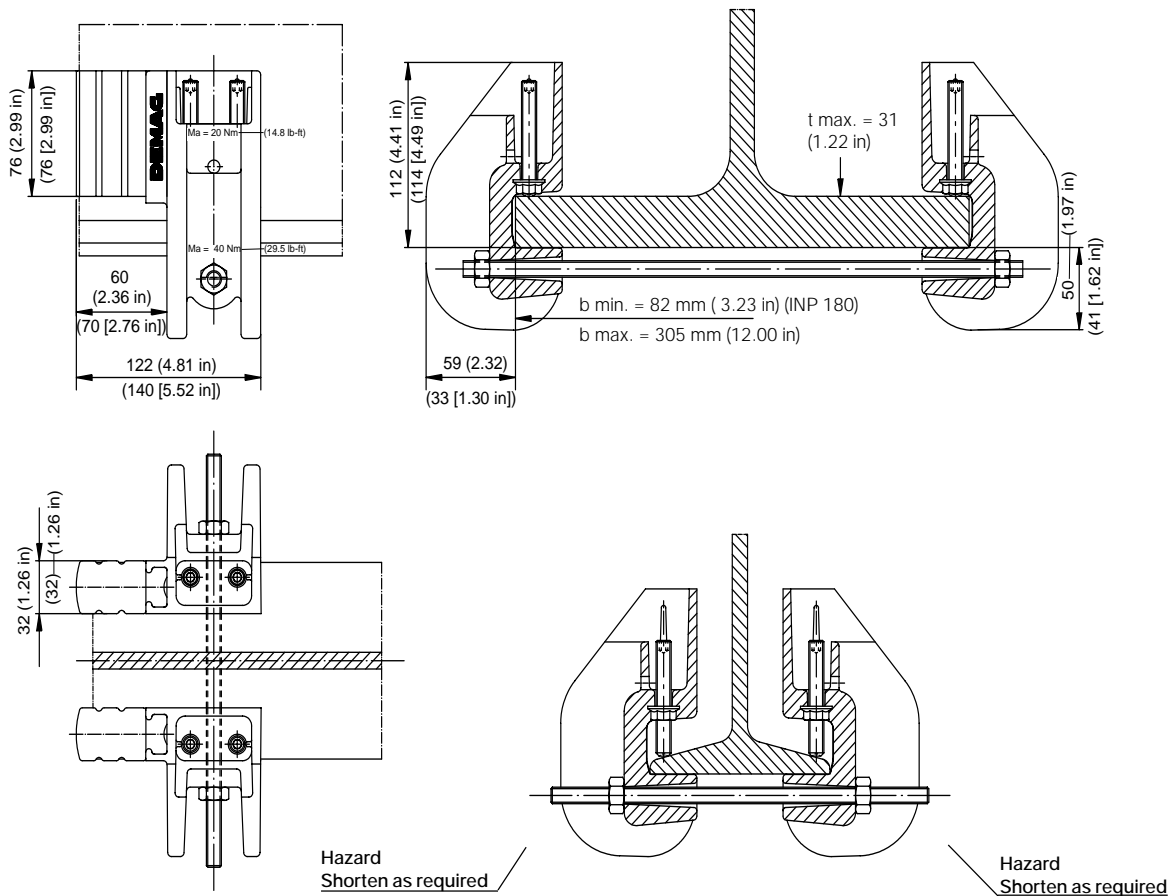
2 Technical data

KP-A10 dimensions



KP-A12 dimensions

82691044.eps



82691244.eps

Bumper material

- Operating temperature range: from -20°C to +70°C (-4 to +158°F),
- Sufficient resistance to ageing, ozone and weather,
- Low resistance to oils and greases,
- Good resistance to acids and lyes.

General operating conditions

Suitable for sloping and parallel flanges.

Bumper size	KP-A10	KP-A12
Flange thickness	max. 21 mm (0.83 in)	max. 31 mm (1.22 in)
Flange width	50 mm to 314 mm (1.96-12.36 in)	82 mm to 305 mm (3.23-12.00 in)

Possible travel wheel as bumper counter-surface

Bumper size	KP-A10	KP-A12
Travel wheel diameter	56 mm to 80 mm (2.20-3.15 in)	80 mm to 125 mm (3.16-4.92 in)

Suitable for following MDC monorail trolleys

Bumper size	KP-A10	KP-A12
Trolley type and size	CF 5 DK, CF 8 DK	RU/EU 11 DK, 22 DK and 55 DK
	RU 3 DK, RU 6 DK, RU/EU 11 DK	-
	RU/EU 22 DK und 55 DK - trolleys only together with drop stop as bumper counter-surface	-

KP-A10 and KP-A12 clamp-fitted bumpers are suitable for operation with the above mentioned trolleys in combination with the corresponding chain or rope hoists.

Ordering data KP-A10 clamp-fitted bumper

Designation	KP-A10/150	KP-A10/250	KP-A10/360
Ident. no.	826 924 44	826 926 44	826 928 44
Flange width mm (in)	50 - 104 (1.97-4.09)	105 - 204 (4.13-8.03)	205 - 314 (8.07-12.36)

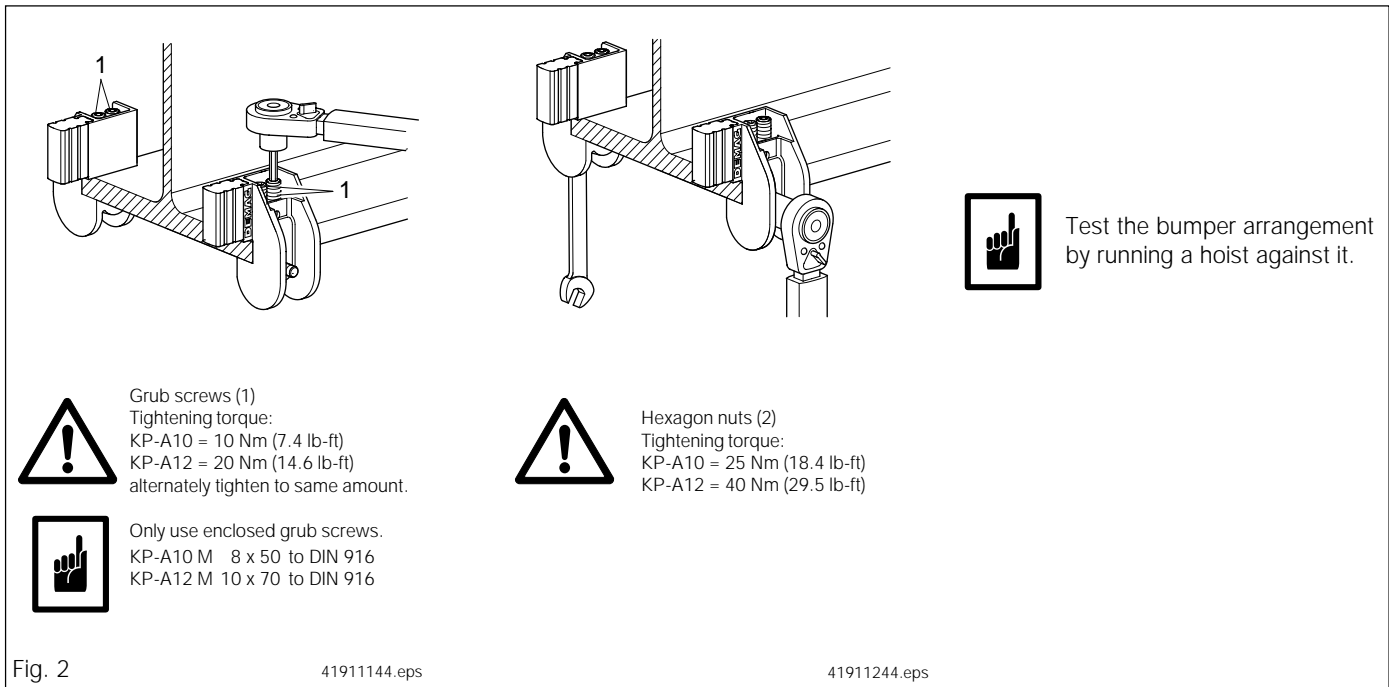
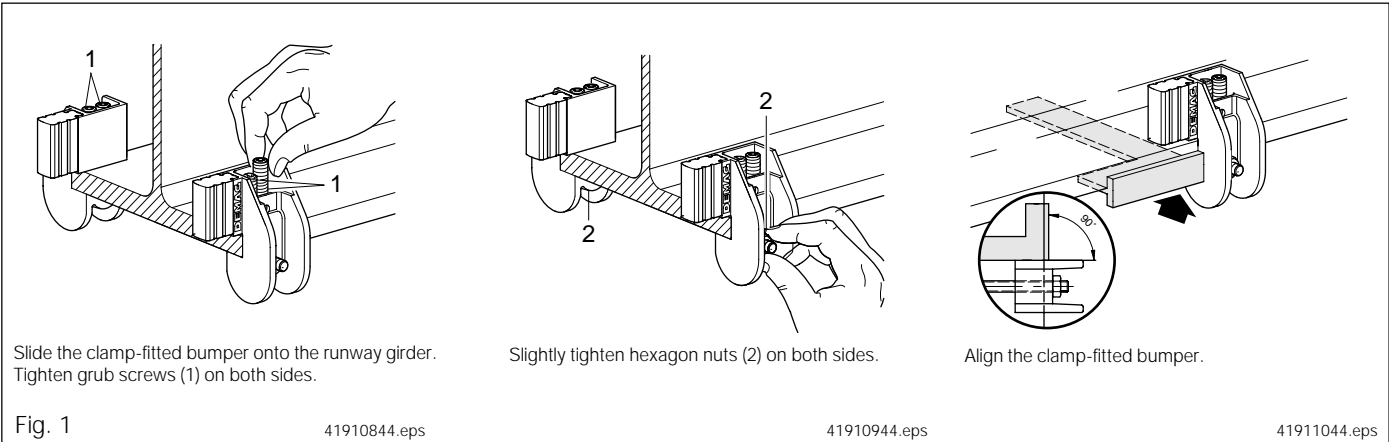
Two of the ident. no. parts given are required for providing limit stops at both ends of the runway.

Ordering data KP-A12 clamp-fitted bumper

Designation	KP-A12/250	KP-A12/360
Ident. no.	826 972 44	826 974 44
Flange width mm (in)	82 - 195 (3.23-7.67)	196 - 305 (7.71-12.00)

Two of the ident. no. parts given are required for providing limit stops at both ends of the runway.

3 Fitting instructions



Bumper profile ident. nos.: KP-A10 826 903 44
 KP-A12 826 953 44



Safety note

Clamp-fitted bumpers are safety features and regular checks must be carried out to ensure that they are correctly fitted. Retighten to tightening torques specified in fig. 2 as required.

Loosened screws might result in the trolley falling down.

Sales and Service Centers in North America

British Columbia

19292 60th Ave., Suite 116 • Surrey, British Columbia V3S 8E5
Telephone: (604) 530-5155 • Fax: (604) 530-5189

California

5435 Industrial Parkway • San Bernardino, California 92407
Telephone: (909) 880-8800 • Fax: (909) 880-4469

Connecticut

99 Rainbow Road, Suite C • East Granby, CT 06026
Telephone: (860) 653-2764 • Fax: (860) 844-8165

Georgia

3625 Swiftwater Park Drive • Suwanee, Georgia 30174
Telephone: (770) 932-0000 • Fax: (770) 932-1903

Illinois

12040 Raymond Court • Huntley, Illinois 60142
Telephone: (847) 515-7030 • Fax: (847) 515-7040

Michigan

24541 Maplehurst Drive • Clinton Township, Michigan 48036
Telephone: (810) 954-1000 • Fax: (810) 954-1001

500 Plymouth Ave. N.E. • Grand Rapids, Michigan 49505-6098
Telephone: (616) 336-5674 • Fax: (616) 732-2175

Missouri

529 E. 5th Street • Washington, Missouri 63090
Telephone: (636) 390-2495 • Fax: (636) 390-0366

North Carolina

14001 South Lakes Drive • Charlotte, NC 28273
Telephone: (704) 716-2807 • Fax: (704) 716-2815

Ohio

29201 Aurora Road • Cleveland, Ohio 44139
Telephone: (440) 248-2400 • Fax: (440) 248-3086

Ontario

1155 North Service Road West • Oakville, Ontario L6M 3E3
Telephone: (905) 825-5900 • Fax: (905) 825-5901

Pennsylvania

2148 Embassy Drive • Lancaster, Pennsylvania 17603
Telephone: (717) 396-9711 • Fax: (717) 396-9719

Quebec

2700 Sabourin • St-Laurent, Quebec H4S 1M2
Telephone: (514) 336-5556 • Fax: (514) 336-4349

Texas

16430 Aldine-Westfield Road • Houston, Texas 77032
Telephone: (281) 443-7331 • Fax: (281) 443-7308

8600 W. Royal Lane • Suite 100 B • Irving, Texas 75063
Telephone: (817) 800-8786 • Fax: (972) 929-2514

Washington

16771 N.E. 80th Street, Suite 205 • Redmond, Washington 98052
Telephone: (425) 883-4668 • Fax: (425) 883-4828

Mannesmann Dematic Corporation

29201 Aurora Road
Cleveland, Ohio 44139
Telephone: (440) 248-2400
Fax: (440) 248-3086
Internet: <http://www.dematic-us.com>